

DS-2CC502/512/592P(N)-IR/IR3 IR Dome Camera



DS-2CC502/512/592P(N)-IR3



DS-2CC502/512/592P(N)-IR



Key features

- Compact design
- 1/3" Sony CCD
- Low illumination
- Day / night auto switch
- Rich image enhancements
- IP66 rating

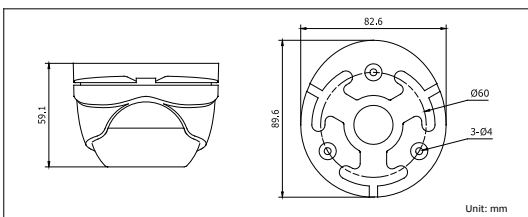
Specifications

	DS-2CC502P(N)-IR(IR3)	DS-2CC512P(N)-IR(IR3)	DS-2CC592P(N)-IR(IR3)
Camera			
Image sensor	1/3" Sony CCD		
Signal system	PAL / NTSC		
Effective pixels	PAL: 500 (H) × 582 (V) NTSC: 510 (H) × 492 (V)	PAL: 752 (H) × 582 (V) NTSC: 768 (H) × 494 (V)	
Min. illumination	0.1 lux@F1.2, AGC on, 0 lux with IR 0.2 lux@F1.8, AGC on, 0 lux with IR		
Shutter time	PAL: 1/50s ~ 1/100,000s NTSC: 1/60s ~ 1/100,000s		
Lens	"-IR" series: 6mm @ F1.8 (3.6mm, 2.8mm optional) Angle of view: 47° (6mm) "-IR3" series: 12 mm @ F1.8 (3.6 mm, 6 mm, 8 mm, 16 mm optional) Angle of view: 22.72° (12 mm)		
Lens mount	M12		
Angle adjustment	Pan: 0 ~ 355°; tilt: 0 ~ 75°;		
Day & night	Electronic		
Horizontal resolution	420 TVL	480 TVL	540 TVL
Synchronization	Internal synchronization		
Video output	1Vp-p composite output (75Ω / BNC)		
S/N ratio	More than 48 dB		
BLC	On		
General			
Operating conditions	-10°C ~ 60°C (14°F ~ 140°F) Humidity 90% or less (non-condensing)		
Power supply	12 VDC ± 10%		
Power consumption	"-IR" series: 3W MAX "-IR3" series: 6W MAX		
Weather-proof rating	IP66		
IR range	"-IR" series: approx 10 ~ 20 meters "-IR3" series: approx 30 ~ 40 meters		
Dimensions	"-IR" series: Φ 89.6 × 59.1mm (Φ 3.53" × 2.33") "-IR3" series: Φ 129 × 80.1mm (Φ 5.08" × 3.15")		
Weight	"-IR" series: 400g (0.88 lbs) "-IR3" series: 700g (1.54 lbs)		

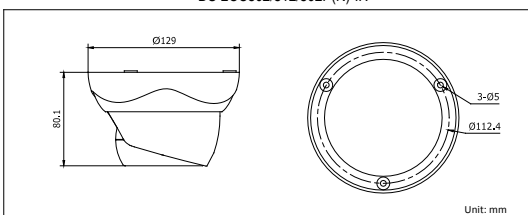
Available models

DS-2CC502P-IR, DS-2CC502N-IR, DS-2CC512P-IR, DS-2CC512N-IR, DS-2CC592P-IR, DS-2CC592N-IR
DS-2CC502P-IR3, DS-2CC502N-IR3, DS-2CC512P-IR3, DS-2CC512N-IR3, DS-2CC592P-IR3, DS-2CC592N-IR3

Dimensions



DS-2CC502/512/592P(N)-IR



DS-2CC502/512/592P(N)-IR3