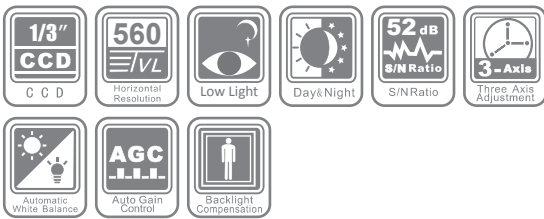


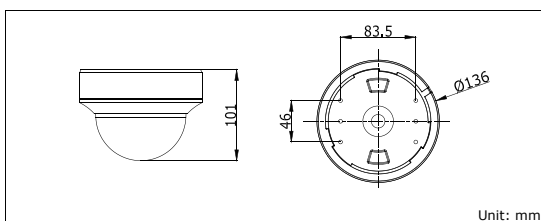
## DS-2CC5173P(N)-VF 560TVL Dome Camera



### Key Features

- 1/3" SONY Super HAD CCD II
- Color: 560TVL, B/W: 600TVL
- Low illumination: 0.1lux@F1.2
- True day / night
- 3D digital noise reduction
- Smart IR support
- Eclipse
- 3-axis adjustment

### Dimensions



### Specifications

DS-2CC5173P(N)-VF	
<b>Camera</b>	
Image sensor	1/3" SONY Super HAD CCD II
Signal system	PAL / NTSC
Effective pixels	PAL: 752 (H) × 582 (V) NTSC: 768 (H) × 494 (V)
Min. illumination	Color: 0.1 lux @ (F1.2, AGC ON), 0.0003 lux @ (F1.2, AGC ON, sensitivity × 256) B/W: 0.01 lux @ (F1.2, AGC ON), 0.00003 lux @ (F1.2, AGC ON, sensitivity × 256) Color: 0.14 lux @ (F1.4, AGC ON), 0.0004 lux @ (F1.4, AGC ON, sensitivity × 256) B/W: 0.014 lux @ (F1.4, AGC ON), 0.00004 lux @ (F1.4, AGC ON, sensitivity × 256)
Shutter time	PAL: 1/50 s to 1/100,000 s NTSC: 1/60 s to 1/100,000 s
Lens	2.8 ~ 12 mm @ F1.4 Angle of view: 92° ~ 27.2°
Lens mount	Φ14
Auto iris	DC drive
Angle adjustment	Pan: 0 ~ 355°, Tilt: 0 ~ 180°, Rotation: 0 ~ 355°
Day / night	IR cut filter with auto switch
Horizontal resolution	560 TVL (Color), 600 TVL (B/W)
Synchronization	Internal/Power synchronization
Video output	1 Vp-p composite output (75 Ω/BNC) Test monitor out [1Vp-p composite output (75 Ω/BNC), device line]
S/N ratio	More than 52 dB
<b>Menu</b>	
Camera ID	On / Off (15 letters, position adjustable)
Auto gain	Low / Middle / High / Off
D/N mode	Auto / Day / Night
White balance	Auto trace WB1 / Auto trace WB2 / Manual / Auto Control
Privacy mask	On / Off, maximum 8 zones
Motion detection	On / Off
BLC	Area / Value / Off
Eclipse	Value
WDR	Indoor Mode / Outdoor Mode / Off
Anti-flicker	On / Off
Language	English / Chinese
Video	SMART IR, Digital Wide Dynamic Range, Eclipse, Gamma Correction, Digital Zoom, Digital Noise Reduction, POS/NEG ,Mirror, Sharpness, Y, C, Defect Pixel Correction
<b>General</b>	
Operating conditions	-10 °C ~ 60 °C (14 °F ~ 140 °F) Humidity 90% or less (non-condensing)
Power supply	24 VAC ± 10%, 12 VDC ± 10%
Power consumption	Max. 4 W (Max. 4.5 W with IR cut filter on)
Dimensions	Φ 136 × 101 mm (Φ 5.35" × 3.98")
Weight	800 g (1.76 lbs)

### Available models

DS-2CC5173P-VF, DS-2CC5173N-VF