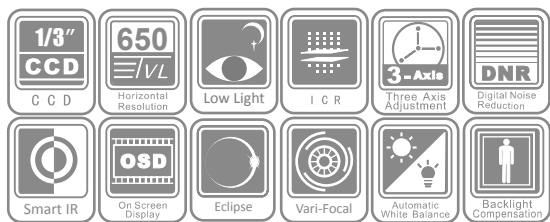


## DS-2CC5191/5193/5195/5197P(N)-VF Vari-focal Dome Camera



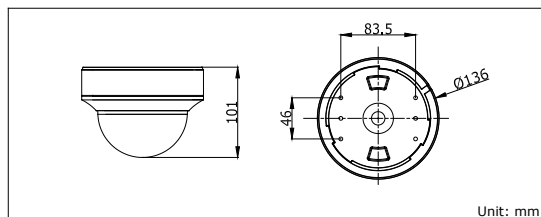
### Specifications

	DS-2CC5191P(N)-VF	DS-2CC5193P(N)-VF	DS-2CC5195P(N)-VF	DS-2CC5197P(N)-VF
<b>Camera</b>				
Image sensor	1/3" SONY EXview HAD CCD II	1/3" SONY EXView HAD CCD II	1/3" SONY EXView HAD CCD II	1/3" SONY Super HAD CCD II
Signal system	PAL / NTSC			
Effective pixels	PAL: 976 (H) × 582 (V), NTSC: 976 (H) × 494 (V)			
Min. illumination	Color: 0.001 Lux @ (F1.2, AGC ON), 0.0001 Lux @ (F1.2, AGC ON, sensitivity × 512) B/W: 0.001 Lux @ (F1.2, AGC ON), 0.00001 Lux @ (F1.2, AGC ON, sensitivity × 512) Color: 0.014 Lux @ (F1.4, AGC ON), 0.00014 Lux @ (F1.4, AGC ON, sensitivity × 512) B/W: 0.0014 Lux @ (F1.4, AGC ON), 0.000014 Lux @ (F1.4, AGC ON, sensitivity × 512)	Color: 0.01 Lux @ (F1.2, AGC ON), 0.0001 Lux @ (F1.2, AGC ON, sensitivity × 512) B/W: 0.001 Lux @ (F1.2, AGC ON), 0.00001 Lux @ (F1.2, AGC ON, sensitivity × 512) Color: 0.014 Lux @ (F1.4, AGC ON), 0.00014 Lux @ (F1.4, AGC ON, sensitivity × 512) B/W: 0.0014 Lux @ (F1.4, AGC ON), 0.000014 Lux @ (F1.4, AGC ON, sensitivity × 512)	Color: 0.001 Lux @ (F1.2, AGC ON), 0.0001 Lux @ (F1.2, AGC ON, sensitivity × 512) B/W: 0.0001 Lux @ (F1.2, AGC ON), 0.00001 Lux @ (F1.2, AGC ON, sensitivity × 512) Color: 0.0014 Lux @ (F1.4, AGC ON), 0.000014 Lux @ (F1.4, AGC ON, sensitivity × 512) B/W: 0.00014 Lux @ (F1.4, AGC ON), 0.0000014 Lux @ (F1.4, AGC ON, sensitivity × 512)	Color: 0.001 Lux @ (F1.2, AGC ON), 0.0001 Lux @ (F1.2, AGC ON, sensitivity × 512) B/W: 0.0001 Lux @ (F1.2, AGC ON), 0.00001 Lux @ (F1.2, AGC ON, sensitivity × 512) Color: 0.0014 Lux @ (F1.4, AGC ON), 0.000014 Lux @ (F1.4, AGC ON, sensitivity × 512) B/W: 0.00014 Lux @ (F1.4, AGC ON), 0.0000014 Lux @ (F1.4, AGC ON, sensitivity × 512)
Shutter time	PAL: 1/50 s to 1/100,000 s NTSC: 1/60 s to 1/100,000 s			
Lens	2.8 - 12 mm @ F1.4 Angle of view: 92° - 27.2°			
Lens mount	φ14			
Auto Iris	DC drive			
Angle adjustment	Pan: 0 - 355°, Tilt: 0 - 180°, Rotation: 0 - 355°			
Day & night	IR cut filter with auto switch			
Horizontal resolution	650 TVL (Color), 700 TVL (B/W)			
Wide Dynamic Range	Digital	Digital	Digital	75 dB
Synchronization	Internal / power synchronization			
Video output	1Vp-p composite output (75 Ω/BNC) Test monitor out [1Vp-p composite output (75 Ω/BNC), device line]			
S/N ratio	More than 62 dB			
<b>Menu</b>				
Camera ID	On / Off (52 letters, position adjustable)	On / Off (16 letters, position adjustable)	On / Off (16 letters, position adjustable)	On / Off (16 letters, position adjustable)
Auto Gain	--	Low / Middle / High / Off		
D/N Mode	Auto / Day / Night			
White Balance	ATW/Push/User1/User2/Anti CR/Manual/Push lock	Auto trace WB1/Auto trace WB2/Manual/Auto Control		
Private Mask	On / Off, maximum 8 zones	On / Off, maximum 12 zones		
Motion Detection	On / Off	On / Off	On / Off	On / Off
BLC	BLC/HLC/Off	Area/Value/Off		
WDR	--	Value/ Contrast / Return		
Anti-Flicker	--	On/Off		
Language	English/Chinese			
Function	ATR, HLC, DNR, Sharpness, Brightness, Contrast, Hue, Gain, Mirror, Defect Pixel Correction	SMART IR, Digital Wide Dynamic Range, Eclipse, Digital Noise Reduction, Sharpness, Brightness, Saturation, Resolution, Electronic image stabilization, Digital Zoom, Mirror, Defect Pixel Correction	SMART IR, Eclipse, Digital Noise Reduction, Sharpness, Brightness, Saturation, Resolution, Electronic image stabilization, Digital Zoom, Mirror, Defect Pixel Correction	
Scene	--	Indoor Standard , Indoor Backlight , Outdoor, Low illumination , IR Standard , Customize	Indoor Standard , Indoor Backlight , Outdoor, Low illumination , Customize	
<b>General</b>				
Operating conditions	-10°C ~ 60°C (14°F ~ 140°F) Humidity 90% or less (non-condensing)			
Power supply	24 VAC ± 10%, 12 VDC ± 10%			
Power consumption	Max. 4 W (Max. 4.5 W with IR cut filter on)			
Dimensions	φ 136 × 101 mm (φ 5.35" × 3.98")			
Weight	800 g (1.76 lbs)			

### Key features

- 1/3" Sony CCD
- 650 TVL high resolution
- Super low illumination
- True day / night
- Smart IR
- 3-axis adjustment

### Dimensions



### Available models

DS-2CC5191P-VF, DS-2CC5191N-VF  
 DS-2CC5193P-VF, DS-2CC5193N-VF  
 DS-2CC5195P-VF, DS-2CC5195N-VF  
 DS-2CC5197P-VF, DS-2CC5197N-VF