

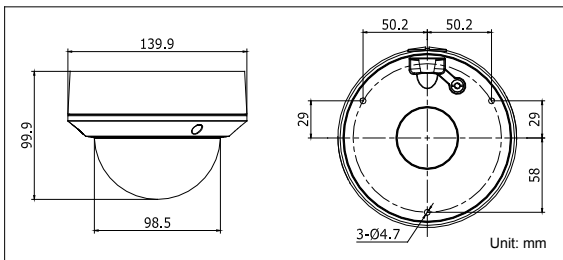
DS-2CC5281P-AVPIR2 600TVL Outdoor Vandal Proof Dome



Key features

- 600TVL high resolution
- True day/night
- Vari-focal Lens
- DNR, Smart IR, Digital WDR, Eclipse,
- Vandal resistant
- 30m IR distance
- IP66 weatherproof rating

Dimensions



Specifications

DS-2CC5281P-AVPIR2	
Camera	
Image sensor	1 / 3" SONY Super HAD CCD II
Signal system	PAL
Effective pixels	752 (H) × 582 (V)
Min. illumination	0.001Lux @ (F1.2,AGC ON), 0 Lux with IR 0.0014Lux @ (F1.4,AGC ON), 0 Lux with IR
Shutter time	1 / 50 s to 1 / 100,000 s
Lens	2.8 - 12 mm @ F1.4 Angle of view: 80° - 27.2°
Lens mount	φ14
Auto iris	DC drive
Angle adjustment	Pan: 0 - 355°, Tilt: 0 - 75°, Rotation: 0 - 355°
Day & night	IR cut filter with auto switch
Horizontal resolution	600 TVL (Color), 650 TVL (B / W)
Synchronization	Internal / Power synchronization
Video output	1Vp-p composite output (75 Ω / BNC) Test monitor out [1Vp-p composite output (75 Ω / BNC), device line]
S / N ratio	More than 62 dB
Menu	
Camera ID	On / Off (52 letters, position adjustable)
D / N mode	Auto / Day / Night / EXT1 / EXT2
White balance	ATW / Push / User1 / User2 / Anti CR / Manual / Push lock
Private mask	On / Off, maximum 8 zones
Motion detection	On / Off
Back light	BLC / HLC / Off
Language	English / Chinese / Korean / Italian / Russian / Portuguese / German / French
Function	ATR, HLC, DNR, Sharpness, Brightness, Contrast, Hue, Gain, Mirror, Defect Pixel Correction
General	
Temperature / Humidity	-10 °C - 60 °C (14 °F - 140 °F), Humidity 90% or less (non-condensing)
Power supply	24 V AC ± 10%, 12 V DC ± 10%
Power consumption	Max. 4 W (Max. 4.5 W with IR cut filter on)
Ingress protection level	IP66
IR range	Approx 20 to 30 meters
Impact protection	IEC60068-2-75 test, Eh, 50J; EN50102, up to IK10.
Dimension	Φ 139.9 × 99.9 mm (Φ 5.51" × 3.93")
Weight	800 g (1.76 lbs)

Available models

DS-2CC5281P-AVPIR2