

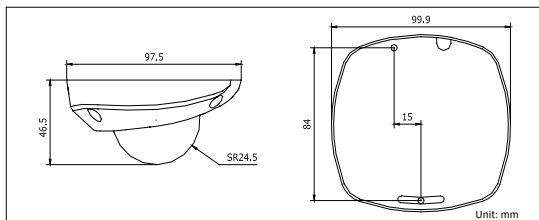
DS-2CD7153-E 2MP Network Mini Dome Camera



Key features

- 1/3" progressive scan CMOS
- H.264 / MPEG4 / MJPEG video compression
- Up to 2 megapixel resolution
- HD 720P real time video
- Day / night auto switch
- Vandal-proof housing
- IP66 rating

Dimensions



Specifications

DS-2CD7153-E	
Camera	
Image sensor	1/3" progressive scan CMOS
Min. illumination	0.5 lux@F1.2, AGC on, 0.1 lux@F1.2, AGC on, sens-up x 5 1.1 lux@F1.8, AGC on, 0.2 lux@F1.8, AGC on, sens-up x 5
Shutter time	1/25s ~ 1/100,000s
Lens	4mm @F1.8 (2.8, 6, 8mm optional), angle of view: 68°
Lens mount	M12
Angle adjustment	Pan: ± 15°, tilt: 0 ~ 90°, rotation: ± 15°
Day & night	Electronic
Compression standard	
Video compression	H.264 / MPEG4 / MJPEG
Bit rate	32 Kbps ~ 16 Mbps
Dual stream	Yes
Image	
Max. image resolution	1600 x 1200
Frame rate	50 Hz: 12.5 fps (1600 x 1200) 12.5 fps (1600 x 912) 25 fps (1280 x 960) 25 fps (1280 x 720) 60 Hz: 15 fps (1600 x 1200) 15 fps (1600 x 912) 25 fps (1280 x 960) 30 fps (1280 x 720)
Image settings	Saturation, brightness, contrast adjustable through client software or web browser
Network	
Network storage	NAS (iSCSI optional)
Alarm trigger	Motion detection, tampering alarm, network disconnect, IP address conflict
Protocols	TCP/IP, HTTP, DHCP, DNS, DDNS, RTP, RTSP, PPPoE, SMTP, NTP, SNMP, HTTPS, FTP, 802.1x, Qos (SIP, SRTP, IPv6 optional)
Security	User authentication, watermark
System compatibility	ONVIF, PSIA, CGI
Interface	
Communication interface	1 RJ45 10M / 100M ethernet port
Reset button	Yes
General	
Operating conditions	-10°C ~ 60°C (14°F ~ 140°F) humidity 90% or less (non-condensing)
Power supply	12 VDC ± 10%, PoE (802.3af)
Power consumption	max. 4W
Impact protection	IEC60068-275Eh, 50J; EN50102, up to IK10
Weather-proof rating	IP66
Dimensions	99.9 x 97.5 x 46.5 mm (3.93" x 3.84" x 1.83")
Weight	250g (0.55 lbs)

Available models

DS-2CD7153-E