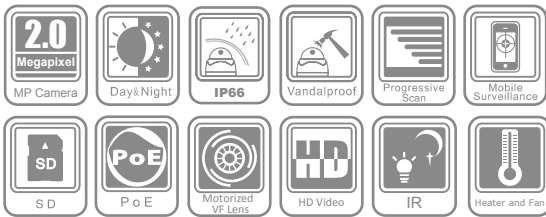


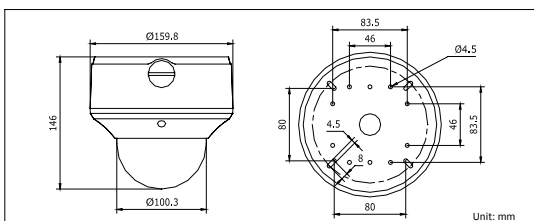
DS-2CD7253F-E(I)Z(H) 2MP Outdoor Network Camera



Key features

- 2 megapixel (1600 x 1200) high resolution
- HD720p real-time recording
- 1/3" progressive scan CMOS
- Motorized V/F lens
- Day / night auto switch
- Vandal-proof housing
- IP66 rating
- IR LEDs optional
- Built-in heater & fan optional

Dimensions



Specifications

DS-2CD7253F-E(I)Z(H)	
Camera	
Image sensor	1/3" Progressive Scan CMOS
Min. illumination	0.5 lux @ F1.2, AGC ON 0.8 lux @ F1.6, AGC ON -I: 0 lux with IR
Shutter time	1/25s ~ 1/100,000s
Lens	2.7 ~ 9 mm @ F1.2, angle of view: 101° ~ 30.4°
Lens mount	Ø14
Auto iris	DC drive
Angle Adjustment	Pan: 0 ~ 355°, Tilt: 0 ~ 80°, Rotation: 0 ~ 355°
Day & Night	Electronic (-I: IR cut filter with auto switch)
Compression Standard	
Video compression	H.264 / MPEG4 / MJPEG
Bit rate	32 Kbps ~ 16 Mbps
Dual stream	Yes
Image	
Max. Resolution	1600x1200
Frame rate	50Hz: 12.5fps (1600x1200), 12.5fps (1600x912), 25fps (1280x960), 25fps (1280x720) 60Hz: 15fps (1600x1200), 15fps (1600x912), 25fps (1280x960), 30fps (1280x720)
Image settings	Saturation, Brightness, Contrast adjustable by client software or web browser
Network	
Network storage	NAS (iSCSI optional)
Alarm trigger	Motion detection, tampering alarm, network disconnect, IP address conflict, storage exception
Protocols	TCP/IP, HTTP, DHCP, DNS, DDNS, RTP/RTSP, PPPoE, SMTP, NTP, SNMP, HTTPS, FTP, 802.1x, Qos (SIP, SRTP, IPv6 optional)
Security	User authentication, watermark
Interface	
Communication interface	1 RJ45 10 M / 100 M Ethernet interface
Video output	1 Vp-p composite output (75 Ω/RCA)
On-board storage	Built-in Micro SD card slot, up to 32 GB
Reset button	Yes
General	
Operating conditions	-10 °C ~ 60 °C (14 °F ~ 140 °F), humidity 90% or less (non-condensing) -H: -40 °C ~ 60 °C (-40 °F ~ 140 °F) with heater and fan on
Power supply	24 VAC ± 10%, PoE (802.3af) -H: 24 VAC ± 10%, High PoE (802.3at)
Power consumption	Max. 9 W, -I: max. 12 W, -H: max. 24 W with heater & fan on
Impact protection	IEC60068-2-75Eh, 50J; EN50102, up to IK10
Ingress protection level	IP66
IR range	-I: approx. 20 ~ 30m (65.6 ~ 98.4ft)
Dimensions	Ø159.8 × 146 mm (Ø6.29" × 5.75")
Weight	2100 g (4.62 lbs)

Available models

DS-2CD7253F-EZ, DS-2CD7253F-EIZ, DS-2CD7253F-EZH, DS-2CD7253F-EIZH

- * -H: built-in heater and fan
- * -I: IR LEDs, up to 30m
- * -Z: motorized VF lens

* Product picture and technical specs subject to change without previous notice. For further information, please contact our local sales representatives.