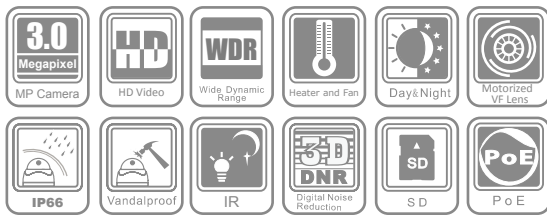


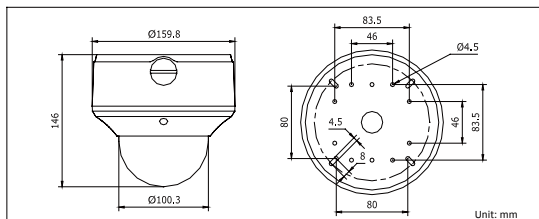
DS-2CD7254FWD-E(I)Z(H) 3.0MP WDR Outdoor Network Camera



Key features

- 3.0 mega-pixel (2048 x 1536) with Full HD video
- 120dB wide dynamic range
- Super low-light
- Motorized VF lens
- 3D digital noise reduction
- Vandal-proof housing
- IP66 rating
- IR LEDs optional (-I)
- Built-in heater & fan optional (-H)

Dimensions



Specifications

DS-2CD7254FWD-E(I)Z(H)	
Camera	
Image sensor	1/2.5" progressive scan CMOS
Min. illumination	0.1 lux @F1.2, AGC on 0.17 lux @F1.6, AGC on 0 lux with IR
Shutter time	1/25s ~ 1/100,000s
Lens	2.7 ~ 9 mm @F1.6, Angle of view: 101° ~ 30.4°
Lens mount	Φ14
Auto iris	DC drive
Angle Adjustment	Pan: 0 ~ 355°, Tilt: 0 ~ 80°, Rotation: 0 ~ 355°
Day & Night	Electronic (-: IR cut filter with auto switch)
Wide dynamic range	120dB
Digital noise reduction	3D DNR
Compression Standard	
Video compression	H.264 / MPEG4 / MJPEG
Bit rate	32 Kbps ~ 16 Mbps
Dual stream	Yes
Image	
Max. Image Resolution	2048 × 1536
Frame rate	50Hz: 12.5fps (2048 × 1536), 25fps (1920 × 1080), 25fps (1600 × 1200) 60Hz: 15fps (2048 × 1536), 30fps (1920 × 1080), 30fps (1600 × 1200)
Image settings	Saturation, Brightness, Contrast adjustable by client software or web browser
Network	
Network storage	NAS (iSCSI optional)
Alarm trigger	Motion detection, tampering alarm, network disconnect, IP address conflict, storage exception
Protocols	TCP/IP, HTTP, DHCP, DNS, DDNS, RTP, RTSP, PPPoE, SMTP, NTP, SNMP, HTTPS, FTP, 802.1x, Qos (SIP, SRTP, IPv6 optional)
Security	User authentication, watermark
Interface	
Communication interface	1 RJ45 10 M / 100 M Ethernet interface
Video output	1 Vp-p composite output (75 Ω/RCA)
On-board storage	Built-in Micro SD slot, up to 32 GB
Reset button	Yes
General	
Operating conditions	-10 °C ~ 60 °C (14 °F ~ 140 °F), Humidity 90% or less (non-condensing) -H: -40 °C ~ 60 °C (-40 °F ~ 140 °F) with heater and fan on
Power supply	24 VAC ± 10%, PoE (802.3af) -H: 24 VAC ± 10%, High PoE (802.3at)
Power consumption	max. 9W -I: max. 12W -H: max. 24W with heater & fan on
Impact protection	IEC60068-2-75Eh, 50J; EN50102, up to IK10
Weather proof rating	IP66
IR range	approx. 20 ~ 30m
Dimensions	Φ159.8 × 146 mm (Φ6.29" × 5.75")
Weight	2100 g (4.62 lbs)

Available models

DS-2CD7254FWD-EZ, DS-2CD7254FWD-EIZ, DS-2CD7254FWD-EZH, DS-2CD7254FWD-EIZH

- * -H: built-in heater and fan
- * -I: IR LEDs, up to 30m
- * -Z: motorized VF lens

* Product picture and technical specs subject to change without previous notice.
For product availability, please contact our local sales representatives.