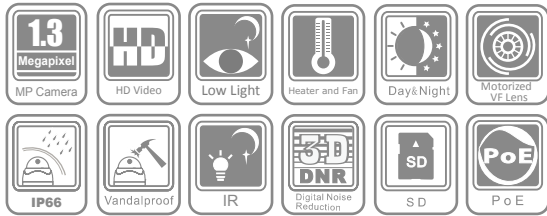


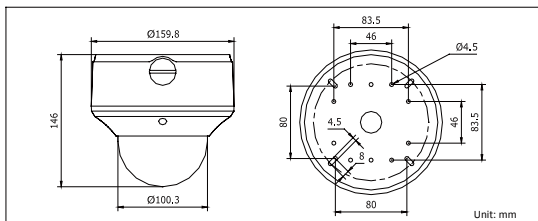
DS-2CD7255F-E(I)Z(H) 2MP Low-light Outdoor Network Camera



Key features

- Up to 2 mega-pixel (1920 x 1080) high resolution
- Full HD1080p video output
- Super low-light
- Motorized VF lens
- 3D digital noise reduction
- Vandal-proof housing
- IP66 rating
- IR LEDs optional (-I)
- Built-in heater & fan optional (-H)

Dimensions



Specifications

DS-2CD7255F-E(I)Z(H)	
Camera	
Image sensor	1/3" progressive scan CMOS
Min. illumination	0.05 lux @F1.2, AGC on, 0.08 lux @F1.6, AGC on, -I: 0 lux with IR
Shutter time	1/25s ~ 1/100,000s
Lens	2.7 ~ 9 mm @F1.6, Angle of view: 101° ~ 30.4°
Lens mount	Φ14
Auto iris	DC drive
Angle Adjustment	Pan: 0 ~ 355°, Tilt: 0 ~ 80°, Rotation: 0 ~ 355°
Day & Night	Electronic (-I: IR cut filter with auto switch)
Digital noise reduction	3D DNR
Compression Standard	
Video compression	H.264 / MPEG4 / MJPEG
Bit rate	32 Kbps ~ 16 Mbps
Dual stream	Yes
Image	
Max. Image Resolution	1920 × 1080
Frame rate	50Hz: 25fps (1920 × 1080) 60Hz: 30fps (1920 × 1080)
Image settings	Saturation, Brightness, Contrast adjustable by client software or web browser
Network	
Network storage	NAS (iSCSI optional)
Alarm trigger	Motion detection, tampering alarm, network disconnect , IP address conflict, storage exception
Protocols	TCP/IP, HTTP, DHCP, DNS, DDNS, RTP, RTSP, PPPoE, SMTP, NTP, SNMP, HTTPS, FTP, 802.1x, Qos (SIP, SRTP, IPv6 optional)
Security	User authentication, watermark
Interface	
Communication interface	1 RJ45 10 M / 100 M Ethernet interface
Video output	1 Vp-p composite output (75 Ω/RCA)
On-board storage	Built-in Micro SD slot, up to 32 GB
Reset button	Yes
General	
Operating conditions	-10 °C ~ 60 °C (14 °F ~ 140 °F), humidity 90% or less (non-condensing) -H: -40 °C ~ 60 °C (-40 °F ~ 140 °F) with heater and fan on
Power supply	24 VAC ± 10%, PoE (802.3af) -H: 24 VAC ± 10%, High PoE (802.3at)
Power consumption	max. 9W -I: max. 12W -H: max. 24W with heater & fan on
Impact protection	IEC60068-2-75Eh, 50J; EN50102, up to IK10
Weather proof rating	IP66
IR range	approx. 20 ~ 30m (65.6~98.4ft)
Dimensions	Φ159.8 × 146 mm (Φ6.29" × 5.75")
Weight	2100 g (4.62 lbs)

Available models

DS-2CD7255F-EZ, DS-2CD7255F-EIZ, DS-2CD7255F-EZH, DS-2CD7255F-EIZH

- * -H: built-in heater and fan
- * -I: IR LEDs, up to 30m
- * -Z: motorized VF lens

* Product picture and technical specs subject to change without previous notice.
For further information, please contact our local sales representatives.