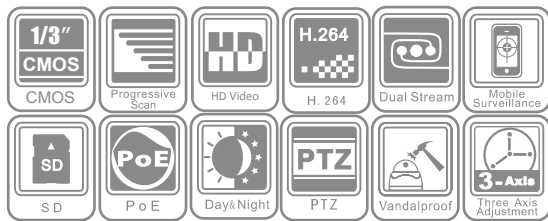


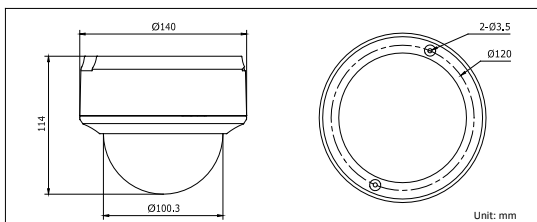
DS-2CD754FWD-E(I) 2MP WDR Indoor Dome Camera



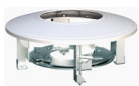
Key features

- Up to 2 megapixel (1920 x 1080) resolution
- 120dB wide dynamic range
- Day / night auto switch
- Full HD1080P real time video
- IR LEDs optional (-I: up to 20m)
- Vandal-proof housing

Dimensions



Accessories



DS-1227ZJ
(Indoor in-ceiling mount)



DS-1229ZJ
(Vandal-proof wall mount)

Specifications

DS-2CD754FWD-E(I)(Z)	
Camera	
Image sensor	1/3" progressive scan CMOS
Min. illumination	0.1 lux@F1.2, AGC ON 0.17 lux@F1.6, AGC ON 0 lux with IR
Shutter time	1/25s ~ 1/100,000s
Lens	2.7 ~ 9 mm @F1.6, angle of view: 101° ~ 30.4°
Lens mount	Φ14
Auto iris	DC drive
Angle adjustment	Pan: 0° ~ 360°, tilt: 0° ~ 75°, rotation: 0° ~ 360°
Day & night	Electronic (-I: IR cut filter with auto switch)
Wide dynamic range	120dB
Compression standard	
Video compression	H.264 / MPEG4 / MJPEG
Bit rate	32 Kbps ~ 16 Mbps
Audio compression	G.711 / G.726
Dual stream	Yes
Image	
Max. image resolution	1920 × 1080
Frame rate	50 Hz: 25 fps (1920 × 1080) 25 fps (1280 × 720) 60 Hz: 30 fps (1920 × 1080) 30 fps (1280 × 720)
Image settings	Saturation, brightness, contrast adjustable through client software or web browser
Network	
Network storage	NAS (iSCSI optional)
Alarm trigger	Motion detection, tampering alarm, network disconnect, IP address conflict, storage exception
Protocols	TCP/IP, HTTP, DHCP, DNS, DDNS, RTP, RTSP, PPPoE, SMTP, NTP, SNMP, HTTPS, FTP, 802.1x, Qos (SIP, SRTP, IPv6 optional)
Security	User authentication, watermark
System compatibility	ONVIF, PSIA, CGI
Interface	
Audio input	1-ch 3.5 mm audio interface, MIC IN/LINE IN
Audio output	1-ch 3.5 mm audio interface (line level, 600 Ω)
Communication interface	1 RJ45 10M / 100M ethernet port and 1 RS-485 interface
Alarm input	2
Alarm output	2
Video output	1 Vp-p composite output (75 Ω / RCA)
On-board storage	Built-in SD/SDHC slot, up to 32 GB
Reset button	Yes
General	
Operating conditions	-10°C ~ 60°C (14°F ~ 140°F) humidity 90% or less (non-condensing)
Power supply	12 VDC ± 10%, PoE (802.3af)
Power consumption	5.5 W ~ 10.5 W (IR LEDs: +2W)
Impact protection	IEC60068-275Eh, 50J; EN50102, up to IK10
IR range	-I: approx 10 to 20 meters
Dimensions	Φ 140 × 114 mm (Φ 5.51" × 4.49")
Weight	1400g (3.09 lbs)

Available models

DS-2CD754FWD-E, DS-2CD754FWD-EI

* -I: IR LEDs, up to 20m