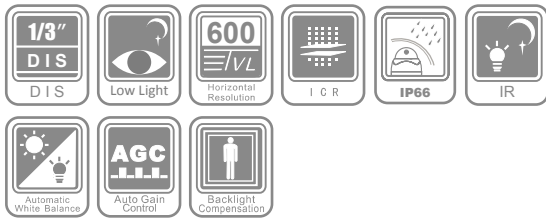


DS-2CE5582P(N)-IR1/IR3 600 TVL DIS IR Dome Camera



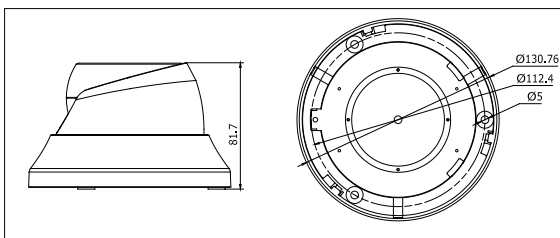
Specifications

DS-2CE5582P(N)-IR1(IR3)	
Camera	
Image sensor	1/3" DIS
Signal system	PAL/NTSC
Effective pixels	720(H)×480(V)
Min. illumination	0.1Lux @ (F1.2,AGC ON),0 Lux with IR 0.2Lux @ (F1.8,AGC ON),0 Lux with IR
Shutter time	PAL: 1/25 s to 1/15,000 s NTSC: 1/30 s to 1/15,000 s
Lens	"-IR1" series: 3.6mm @ F1.8 (2.8mm, 6mm optional), Angle of view: 70° (3.6mm) "-IR3" series: 12mm @ F1.8 (3.6mm, 6mm, 8mm, 16mm optional), Angle of view: 22.72° (12mm)
Lens mount	M12
Angle Adjustment	Pan: 0 - 355°, Tilt: 0 - 75°, Rotation: 0 - 360°
Day & night	IR cut filter with auto switch
Horizontal resolution	600 TVL
Synchronization	Internal synchronization
Video output	1Vp-p composite output (75 Ω/BNC)
S/N ratio	More than 52 dB
General	
Operating conditions	-40 °C ~ 60 °C (-40 °F ~ 140 °F) Humidity 90% or less (non-condensing)
Power supply	12 VDC ± 10%
Power consumption	"-IR1" series: 6.5W MAX "-IR3" series: 7.5W MAX
Housing	Weather-proof IP66-rated
IR range	"-IR1" series: Approx. 10 to 20 meters "-IR3" series: Approx. 30 to 40 meters
Dimensions	Φ 130.76×81.7mm(Φ 5.15" x 3.22")
Weight	700 g (1.54 lbs)

Key features

- 1/3" DIS
- Min. illumination: 0.1 Lux @ F1.2 (0 Lux with IR)
- True Day/Night
- 3-axis (pan/tilt/rotation) positioning
- Wide operating temperature range
- IP66 rating

Dimensions



Available models

DS-2CE5582P-IR1, DS-2CE5582P-IR3, DS-2CE5582N-IR1, DS-2CE5582N-IR3