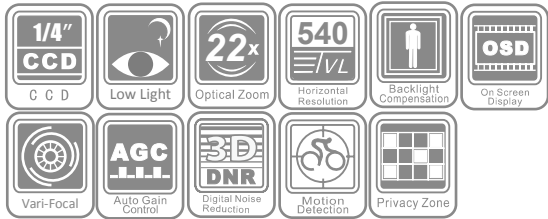


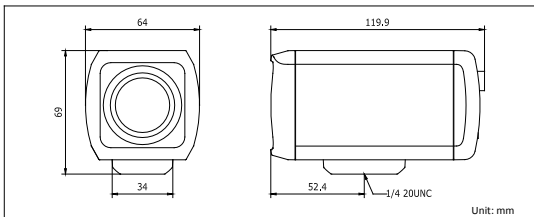
## DS-2CZ2132P(N) 22x CCD Zoom Camera



### Key features

- 1/4" Sony Interline Transfer Super HAD-II CCD
- 22x optical zoom
- 540 TVL high resolution
- Low illumination
- OSD menu
- Day / night auto switch
- 3D digital noise reduction
- Electronic image stabilization

### Dimensions



### Accessories



### Specifications

DS-2CZ2132P(N)	
<b>Camera</b>	
Image sensor	1/4" SONY Interline Transfer Super HAD-II CCD
Signal system	PAL/NTSC
Effective pixels	PAL: 752 (H) × 582 (V) NTSC: 768 (H) × 494 (V)
Min. illumination	Color: 0.2Lux@ (F1.6, AGC ON), 0.0008Lux@ (F1.6, AGC ON, sensitivity×256)
Shutter time	PAL: 1/50s to 1/10, 000s NTSC: 1/60s to 1/10, 000s
Day & night	Electronic
Horizontal resolution	540 TVL
Synchronize mode	Internal
Video output	1 Vp-p Composite Output (75 Ω / BNC)
S/N ratio	>50 dB
<b>Lens</b>	
Focal length	3.9 ~ 85.8 mm, 22x
Zoom speed	Approx. 3s (optical, wide-tele)
Horizontal viewing angle	49.6 ~ 2.40° (wide-tele)
Min. working distance	10 ~ 1500mm (wide-tele)
Aperture range	F1.6 ~ F3.7
<b>Menu</b>	
Camera ID	Off / on (0 ~ 254)
Iris mode	Auto / manual / electronic
Shutter	1/50 (1/60)s ~ 1/10, 000s
Auto gain control	Off / low / high
White balance	ATW 1 / ATW 2 / auto / manual
Focus	Auto / once / manual
Day & night	Auto / B/W / external trigger
Slow shutter	×256 max
Privacy mask	Off / on, Up to 8 zones
Motion detection	Off / mode 1 / mode 2
Video Settings	3D-DNR, Mirror, Definition, Flickerless, Exposure-Compensation, BLC, Electronic image stabilization
Zoom speed	Level 1 ~ 5 adjustable
Digital zoom	Off, ×2, ×4, ×6, ×8, ×10, ×12, ×14, ×16
Zoom ratio display	On / off
ZCF control mode	Mode 1 / mode 2
RS-485	Communication protocol / baud rate / address
Preset	254
<b>General</b>	
Working temperature & humidity	-10°C ~ 60°C, Humidity: ≤ 90% (no condensation)
Power supply	12 VDC ± 10%
Power consumption	4W max.
Dimensions	64 × 69 × 119.9 mm
Weight	450g

### Available models

DS-2CZ2132P, DS-2CZ2132N